





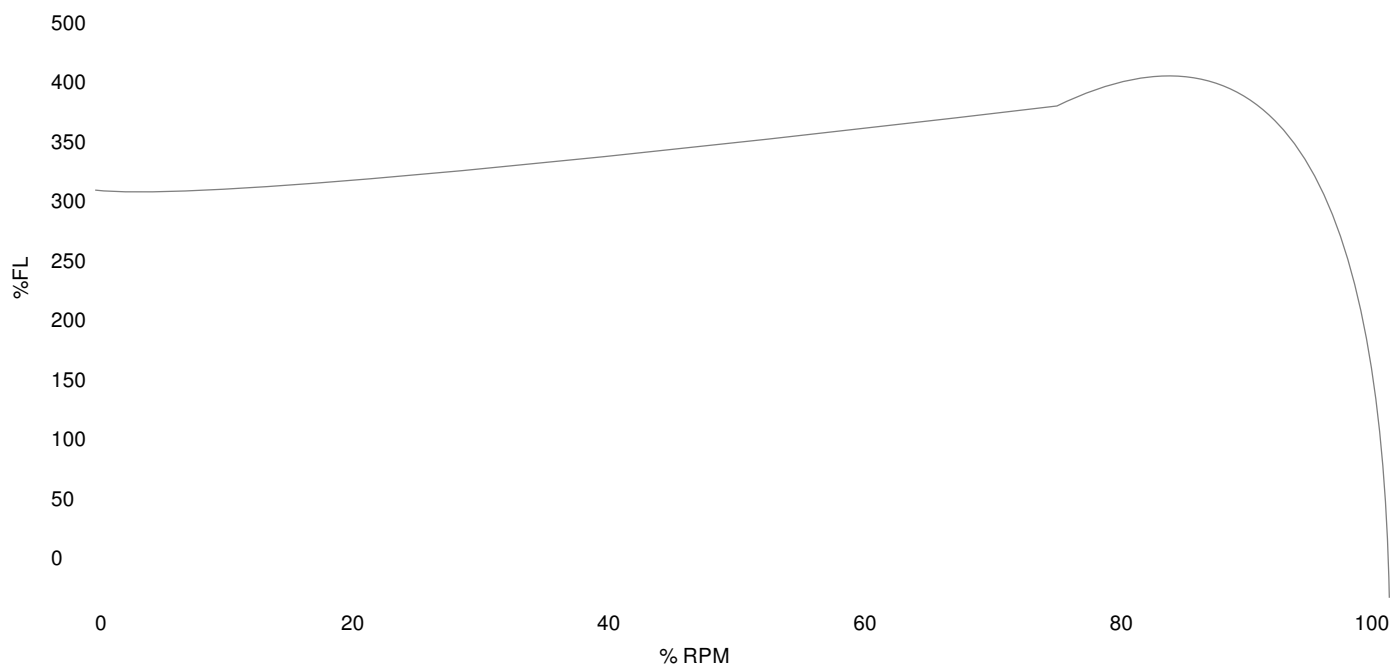
Cobra

**NEMA**

<b>MOTOR MODEL:</b>	CB3-AL-TF-56C-2-B-D-.5
<b>FACTORY TYPE:</b>	TXA

Premium NEMA Cast Aluminum, TEFC

Torque Speed (T-n) Curve



Performance Load Values, High Voltage, 60Hz

Torque Values	Torque lb-ft	% FLT	Performance Values
Locked Rotor Torque	2.36979	315.0	Start Configuration
Pull-Up Torque	2.28703	304.0	Starting Current (A)
Breakdown Torque	2.85879	380.0	No-Load Current (A)
Full Load	0.752313	100.0	No-Load Power Factor

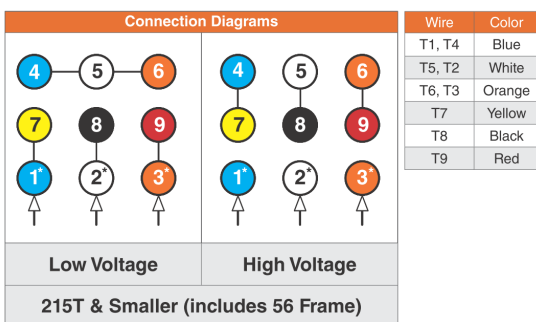
% Load	Horsepower	Current, Amps	Input power, Kilowatts	Speed, RPM	Efficiency	PF
0	-	0.63	-	-	-	-
25	0.125	-	-	-	-	-
50	0.25	-	-	-	-	-
75	0.375	-	-	-	-	-
100	0.5	-	-	-	-	-
125	0.625	-	-	-	-	-

Techtop Industries  
 2815 Colonnades Court  
 Peachtree Corners, GA 30071  
 Tel: 678-436-5540  
 E-Mail: info@techttopind.com

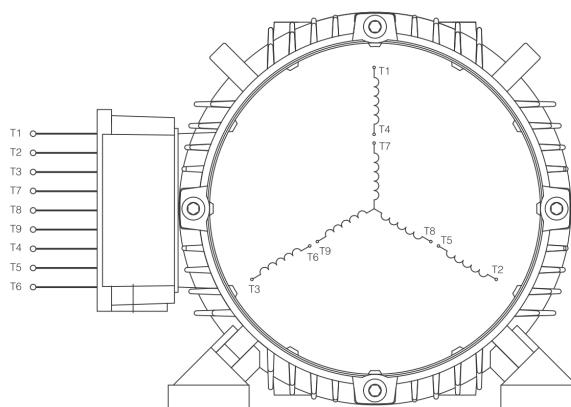
<b>MOTOR MODEL:</b>	CB3-AL-TF-56C-2-B-D-5
<b>FACTORY TYPE:</b>	TXA

Premium NEMA Cast Aluminum, TEFC

**3 Phase NEMA YY/Y 9 Lead 230/460V**



When motor is in F1 position, leads shown with "\*" exit the casing above the center line of the motor, the remaining leads exit below the center line. This information can be used to identify missing or mislabeled leads.



<b>MOTOR MODEL:</b>	CB3-AL-TF-56C-2-B-D-5
<b>FACTORY TYPE:</b>	TXA

## Premium NEMA Cast Aluminum, TEFC

