

## Techtop Industries Nameplate and Performance Data

| NAMEPLATE DATA                             |            |        |
|--|------------|--------|
|  | 60 Hz.     | 50 Hz. |
| Horsepower                                 | 40.0       | 40.0   |
| Frame Size                                 | 286JM      |        |
| Speed, RPM                                 | 3560       | -      |
| Voltage                                    | 3 Phase US | -      |
| # Phase                                    | 3          |        |
| Full Load Amps                             | 93.0/46.5  | -      |
| Power Factor                               | 0.9        | -      |
| Nominal Efficiency                         | 91.7       | -      |
| 3/4 Load Efficiency                        | -          | -      |
| Service Factor                             | 1.25       | -      |
| Duty                                       | Cont. / S1 |        |
| FL Temp Rise °C                            | 55.0       | 68.0   |
| Enclosure                                  | TEFC       |        |
| Ambient Temp °C                            | 40         |        |
| KVA Code                                   | G          | -      |
| FL Amps. @ 208 V                           | -          | -      |
| Insulation Class                           | F          |        |
| NEMA Design                                | B          |        |
| Weight                                     | 523.0      |        |
| DE Bearing                                 | 6311 C3    |        |
| NDE Bearing                                | 6311 C3    |        |
| dB No-Load                                 | -          |        |
| Rotor Wk <sup>2</sup> , Lb-Ft <sup>2</sup> | 0.1419     |        |
| Start Capacitor                            | -          |        |
| Start Capacitor V                          | -          |        |
| Run Capacitor                              | -          |        |
| Run Capacitor V                            | -          |        |
| Number of Leads                            | 12         |        |
| Connection                                 | ??/?       |        |
| Coil Resistance                            | -          |        |

|                     |                                  |
|---------------------|----------------------------------|
| <b>Motor Model:</b> | <b>GA3-CI-TF-286JM-2-BR-D-40</b> |
|---------------------|----------------------------------|

Performance Load Values:

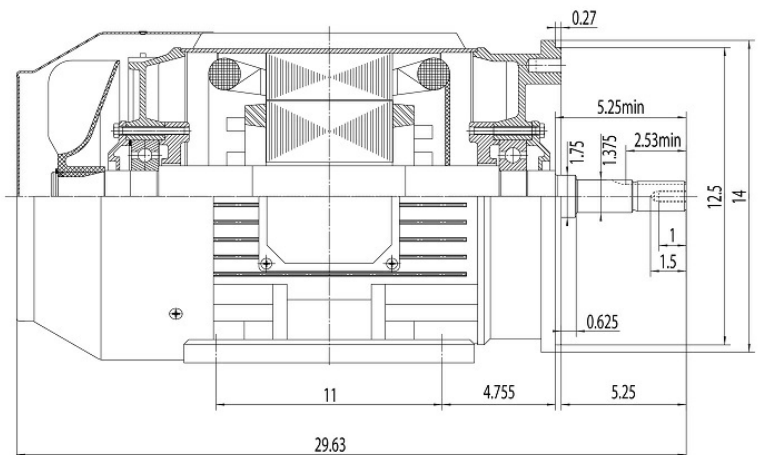
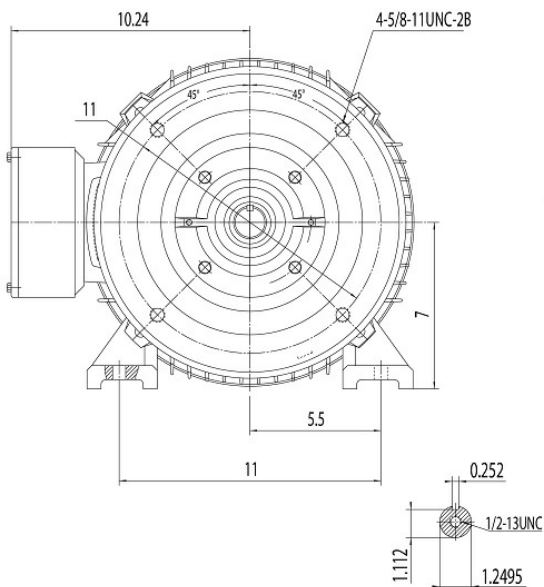
| % Load | Horsepower | Current, Amps | Input power, Kilowatts | Speed, RPM | Efficiency | PF |
|--------|------------|---------------|------------------------|------------|------------|----|
| 0      | -          | -             | -                      | -          | -          | -  |
| 25     | -          | -             | -                      | -          | -          | -  |
| 50     | -          | -             | -                      | -          | -          | -  |
| 75     | -          | -             | -                      | -          | -          | -  |
| 100    | -          | -             | -                      | -          | -          | -  |
| 125    | -          | -             | -                      | -          | -          | -  |
| 150    | -          | -             | -                      | -          | -          | -  |
| SF     | -          | -             | -                      | -          | -          | -  |

|                     | Torque, Lb-Ft | % Full Load Torque | Speed, RPM | Current Amps. |
|---------------------|---------------|--------------------|------------|---------------|
| Locked Rotor Torque | -             | -                  | -          | -             |
| Pull Up Torque      | -             | -                  | -          | -             |
| Breakdown Torque    | -             | -                  | -          | -             |
| Full Load           | -             | -                  | -          | -             |

### Speed Torque Curve

Please contact Techtop for image.

### Dimensional Drawing



Dimensions are for reference only. Allowance should be made for minor deviations in non standard specified properties.

3D Image Link: Not available for this motor