



Three Phase Open Enclosure

NEMA

MOTOR MODEL:	GR3-CI-OP-286TC-4-BR-D-30
FACTORY TYPE:	-

NEMA Cast Iron, ODP

ELECTRICAL DATA		
	60 Hz	50 Hz
Horsepower	30.0	-
Speed, RPM	1770	1460
Voltage	230/460	190/380
# Phase	3	
Full Load Amps	70.6/35.3	-
Power Factor	0.85	-
Nominal Efficiency	94.1	-
Service Factor	1.15	1.0
KVA Code	F	F
FL Amps. @ 208 V	78.1	-
LRC @ 60Hz HV	-	-
Start Capacitor	-	
Start Capacitor V	-	
Run Capacitor	-	
Run Capacitor V	-	
Number of Leads	12	
Connection	4D/2D	
Coil Resistance	-	
Date Code	-	
Load	Efficiency %	P.F.
50%	93.16	0.7691
75%	94.1	0.8551
100%	94.1	0.85
FULL LOAD TEMPERATURE RISE		
FL Temp Rise °C	60.0	-
3D Image Link		
Not available for this motor		

GENERAL DATA		
Frame Size	286TC	
Frame Enclosure	ODP	
Mounting	Rigid	
Insulation Class	F	
Duty	Cont. / S1	
NEMA Design	-	
Frame Material	Cast Iron	
Ingress Protection	23	
Tropicalization	true	
Cable Entry	-	
Feet Removable	-	
Double Drilled	-	
Paint Color	Graphite Gray	
Paint RAL	7024	
Weight lb	443.65	
MECHANICAL DATA		
DE Bearing	6311C3	
NDE Bearing	6309C3	
dB No-Load	-	
Rotor Wk ² , Lb-Ft ²	-	
Comp Ring (wavey washer)	-	
TORQUE VALUES	Torque lb-ft	% FLT
Locked Rotor Torque	-	-
Pull-Up Torque	-	-
Breakdown Torque	-	-
Full Load Torque	-	-
SITE CONDITIONS		
Ambient Temp °C	40	
Altitude Above Sea Level m	1000	

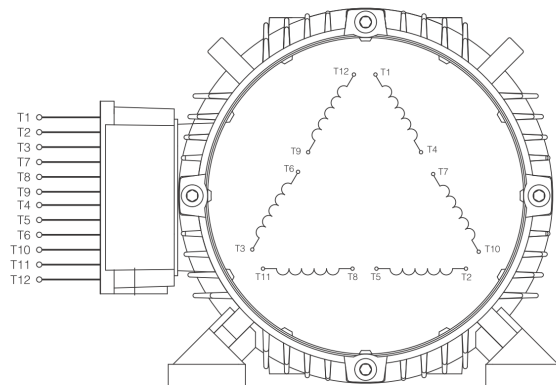
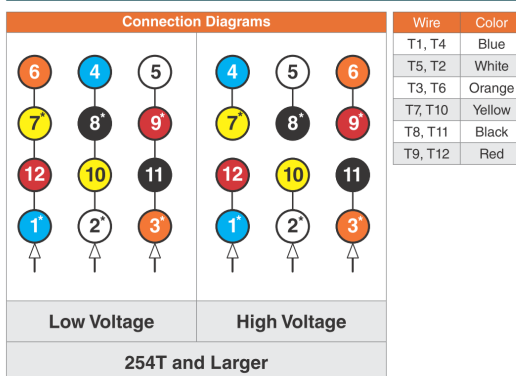
*This report valid for above Date Code and newer models, please contact Techtop for more info.

MOTOR MODEL:	GR3-CI-OP-286TC-4-BR-D-30
FACTORY TYPE:	-

NEMA

NEMA Cast Iron, ODP

3 Phase NEMA ΔΔ/Δ 12 Lead 230/460V



When motor is in F1 position, leads shown with "*" exit the casing above the center line of the motor, the remaining leads exit below the center line. This information can be used to identify missing or mislabelled leads.

MOTOR MODEL:	GR3-CI-OP-286TC-4-BR-D-30
FACTORY TYPE:	-

NEMA

NEMA Cast Iron, ODP

