

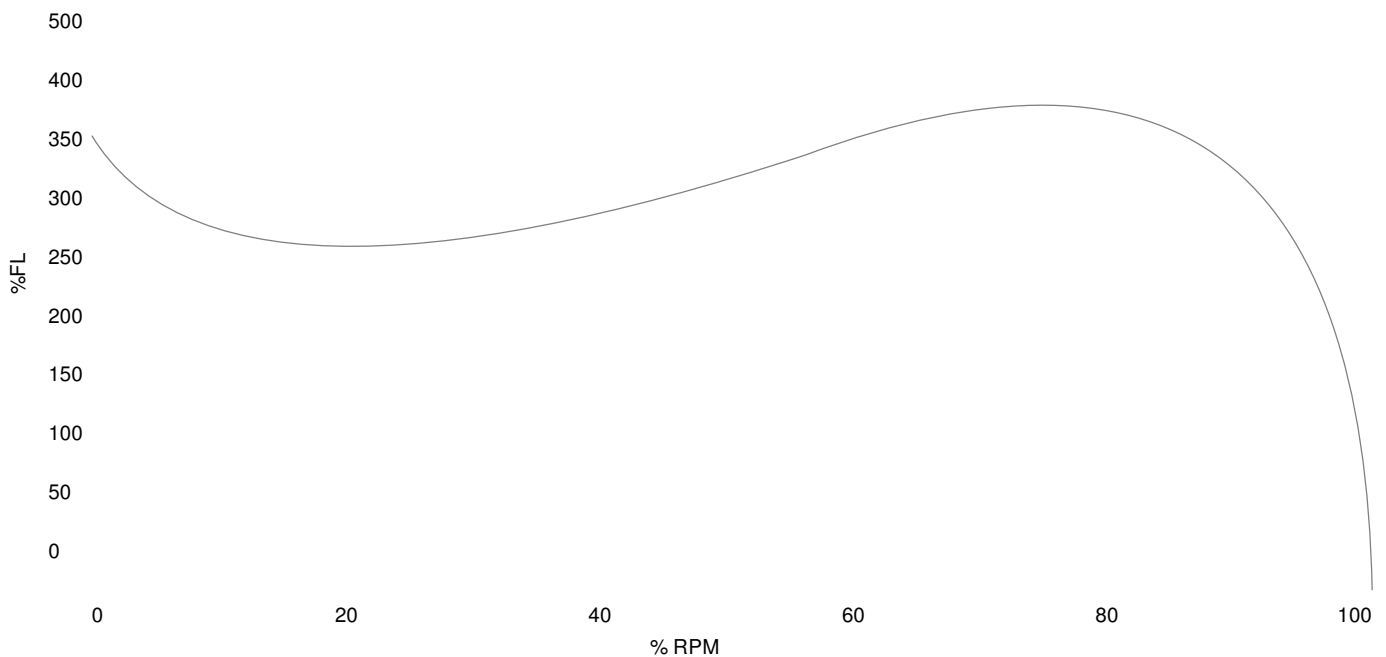


<b>MOTOR MODEL:</b>	GR3-CI-TF-280MB3-4-BR-D-125
<b>FACTORY TYPE:</b>	TCX

**IEC**

IE3 IEC Cast Iron, TEFC

Torque Speed (T-n) Curve



Performance Load Values, High Voltage, 60Hz

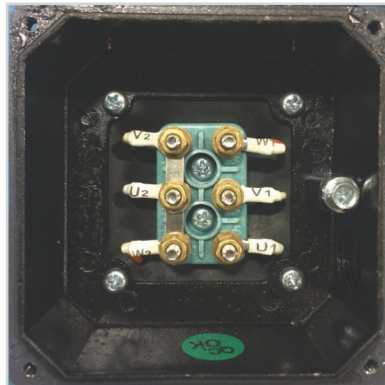
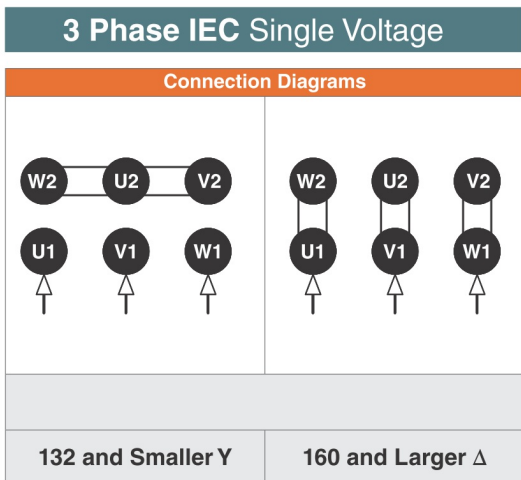
Torque Values	Torque lb-ft	% FLT	Performance Values
Locked Rotor Torque	1294.77	355.0	Start Configuration
Pull-Up Torque	692.977	190.0	Starting Current (A)
Breakdown Torque	1240.06	340.0	No-Load Current (A)
Full Load	364.724	100.0	No-Load Power Factor

% Load	Horsepower	Current, Amps	Input power, Kilowatts	Speed, RPM	Efficiency	PF
0	-	55.58	-	-	-	-
25	31.25	64.5	25.7	1797.7	90.47	0.5
50	62.5	85.06	49.3	1795.2	94.33	0.73
75	93.75	111.22	73.13	1792.7	95.38	0.83
100	125.0	140.92	97.23	1790.0	95.65	0.87
125	156.25	159.57	111.81	1788.3	95.65	0.88

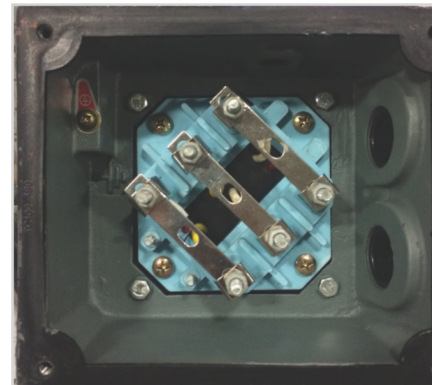
Techtop Industries  
 2815 Colonnades Court  
 Peachtree Corners, GA 30071  
 Tel: 678-436-5540  
 E-Mail: info@techttopind.com

<b>MOTOR MODEL:</b>	GR3-CI-TF-280MB3-4-BR-D-125
<b>FACTORY TYPE:</b>	TCX

IE3 IEC Cast Iron, TEFC



**Notes:** 6 Lead / 6 Post Connection  
Motors connected  $Y$ , 132 frame and smaller



**Notes:** 6 Lead / 6 Post Connection  
Motors connected  $\Delta$ , 160 frame and larger

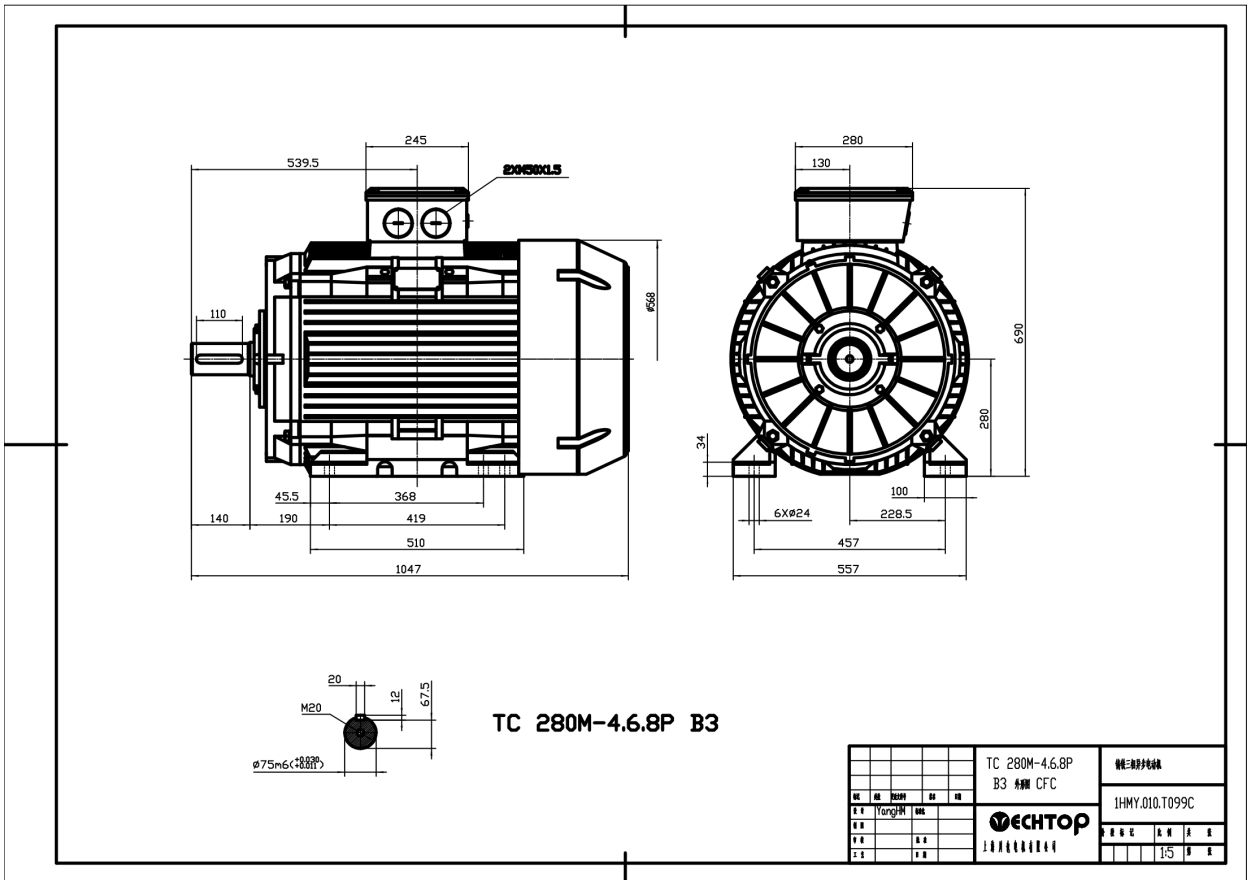
Techtop Industries  
2815 Colonnades Court  
Peachtree Corners, GA 30071  
Tel: 678-436-5540  
E-Mail: info@techttopind.com



<b>MOTOR MODEL:</b>	GR3-CI-TF-280MB3-4-BR-D-125
<b>FACTORY TYPE:</b>	TCX

# IEC

## IE3 IEC Cast Iron, TEFC



Techtop Industries  
 2815 Colonnades Court  
 Peachtree Corners, GA 30071  
 Tel: 678-436-5540  
 E-Mail: info@techttopind.com