

Techtop Industries Nameplate and Performance Data

NAMEPLATE DATA		
	60 Hz	50 Hz
Horsepower	20.0	20.0
Frame Size	286TC	
Speed, RPM	1175	965
Voltage	230/460	190/380
# Phase	3	
Full Load Amps	51.05/25.53	62.8/31.4
Power Factor	0.8	-
Nominal Efficiency	91.7	89.1
3/4 Load Efficiency	-	-
Service Factor	1.25	1.0
Duty	Cont. / S1	
FL Temp Rise °C	60.0	-
Enclosure	TEFC	
Ambient Temp °C	40	
KVA Code	L	F
FL Amps. @ 208 V	56.4528	-
Insulation Class	F	
NEMA Design	A	
Weight	403.515	
DE Bearing	6311C3	
NDE Bearing	6311C3	
dB No-Load	-	
Rotor Wk ² , Lb-Ft ²	-	
Start Capacitor	-	
Start Capacitor V	-	
Run Capacitor	-	
Run Capacitor V	-	
Number of Leads	12	
Connection	??/?	
Coil Resistance	-	

Motor Model:	GR3-CI-TF-286TC-6-BR-D-20
---------------------	----------------------------------

Performance Load Values:

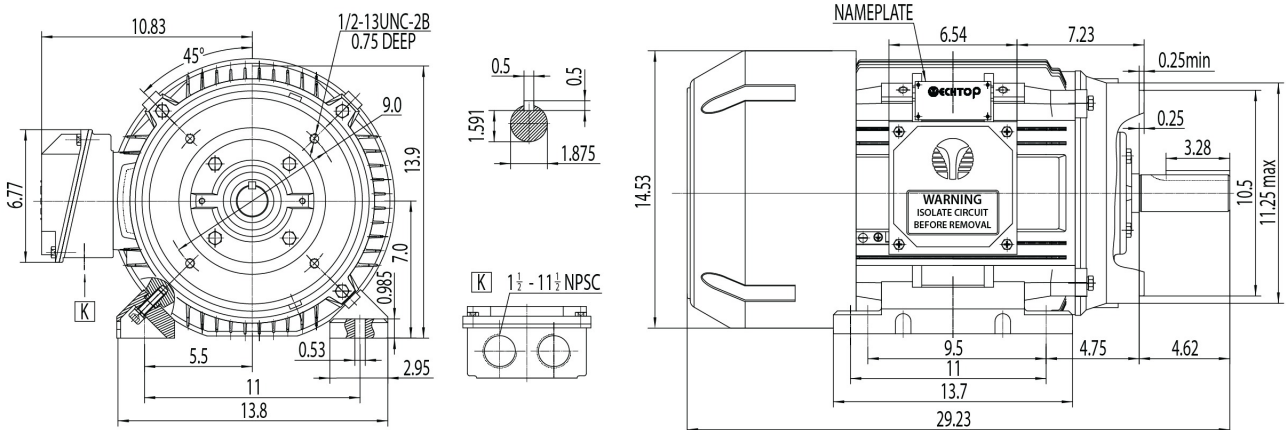
% Load	Horsepower	Current, Amps	Input power, Kilowatts	Speed, RPM	Efficiency	PF
0	-	11.93	-	-	-	-
25	5.0	13.18	4.35	1195.8	86.25	0.41
50	10.0	16.17	8.23	1191.8	91.19	0.64
75	15.0	20.24	12.2	1187.5	92.24	0.76
100	20.0	25.14	16.28	1182.8	92.16	0.81
125	25.0	30.62	20.48	1177.8	91.56	0.84
150	30.0	36.46	24.81	1172.4	90.7	0.85
SF	-	-	-	-	-	-

	Torque, Lb-Ft	% Full Load Torque	Speed, RPM	Current Amps.
Locked Rotor Torque	224.057	249.0	-	236.819
Pull Up Torque	120.577	134.0	-	-
Breakdown Torque	296.043	329.0	-	-
Full Load	89.9826	100.0	1182.8	25.14

Speed Torque Curve

Please contact Techtop for image.

Dimensional Drawing



Dimensions are for reference only. Allowance should be made for minor deviations in non standard specified properties.

3D Image Link: Not available for this motor