

## Techtop Industries Nameplate and Performance Data

NAMEPLATE DATA		
	60 Hz.	50 Hz.
Horsepower	40.0	40.0
Frame Size	324TC	
Speed, RPM	1770	1460
Voltage	3 Phase US	190/380
# Phase	3	
Full Load Amps	97.07/48.54	110/55
Power Factor	0.86	-
Nominal Efficiency	94.1	91.5
3/4 Load Efficiency	-	-
Service Factor	1.25	1.0
Duty	Cont. / S1	
FL Temp Rise °C	78.0	-
Enclosure	TEFC	
Ambient Temp °C	40	
KVA Code	L	F
FL Amps. @ 208 V	107.342	-
Insulation Class	F	
NEMA Design	A	
Weight	539.122	
DE Bearing	6312C3	
NDE Bearing	6312C3	
dB No-Load	-	
Rotor Wk <sup>2</sup> , Lb-Ft <sup>2</sup>	-	
Start Capacitor		
Start Capacitor V	-	
Run Capacitor		
Run Capacitor V	-	
Number of Leads	12	
Connection	??/?	
Coil Resistance	0.3017	

<b>Motor Model:</b>	<b>GR3-CI-TF-324TC-4-BR-D-40</b>
---------------------	----------------------------------

Performance Load Values:

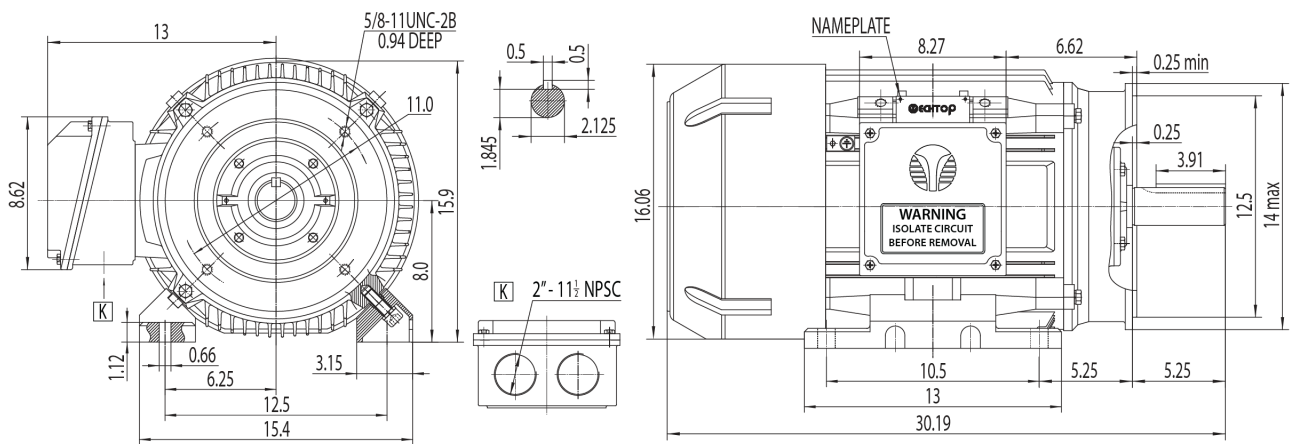
% Load	Horsepower	Current, Amps	Input power, Kilowatts	Speed, RPM	Efficiency	PF
0	20.0	20.61	-	-	-	-
25	20.0	23.81	9.61	1795.1	89.75	0.51
50	20.0	31.86	18.5	1790.4	93.22	0.73
75	30.0	42.04	27.59	1785.3	93.77	0.82
100	40.0	53.83	36.91	1779.7	93.48	0.86
125	20.0	66.72	46.47	1773.8	92.81	0.87
150	20.0	80.2	56.28	1767.5	91.94	0.88
SF	-	-	-	-	-	-

	Torque, Lb-Ft	% Full Load Torque	Speed, RPM	Current Amps.
Locked Rotor Torque	430.673	317.0	-	922.0
Pull Up Torque	249.98	184.0	-	-
Breakdown Torque	400.784	295.0	-	-
Full Load	135.859	100.0	1779.7	53.83

### Speed Torque Curve

Please contact Techtop for image.

### Dimensional Drawing



Dimensions are for reference only. Allowance should be made for minor deviations in non standard specified properties.

3D Image Link: Not available for this motor