

Techtop Industries Nameplate and Performance Data

NAMEPLATE DATA		
	60 Hz	50 Hz
Horsepower	100.0	100.0
Frame Size	444TC	
Speed, RPM	1180	985
Voltage	230/460	190/380
# Phase	3	
Full Load Amps	229.21/114.6	278/139
Power Factor	0.86	-
Nominal Efficiency	95.0	93.5
3/4 Load Efficiency	-	-
Service Factor	1.15	1.0
Duty	Cont. / S1	
FL Temp Rise °C	76.0	-
Enclosure	TEFC	
Ambient Temp °C	40	
KVA Code	H	D
FL Amps. @ 208 V	-	-
Insulation Class	F	
NEMA Design	A	
Weight	1589.81	
DE Bearing	NU319	
NDE Bearing	6319C3	
dB No-Load	-	
Rotor Wk ² , Lb-Ft ²	-	
Start Capacitor	-	
Start Capacitor V	-	
Run Capacitor	-	
Run Capacitor V	-	
Number of Leads	12	
Connection	??/?	
Coil Resistance	-	

Motor Model:	GR3-CI-TF-444TC-6-RR-D-100
---------------------	-----------------------------------

Performance Load Values:

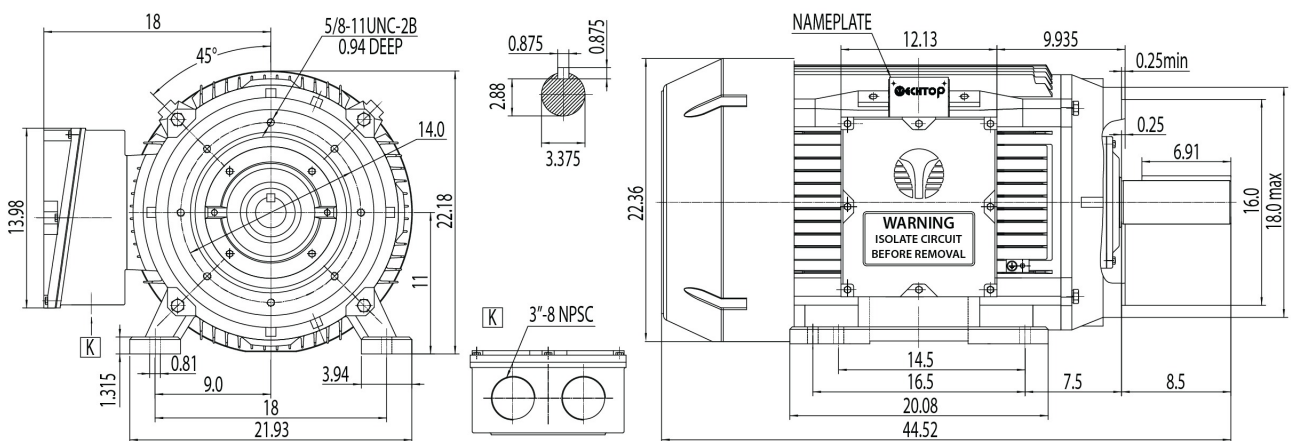
% Load	Horsepower	Current, Amps	Input power, Kilowatts	Speed, RPM	Efficiency	PF
0	-	33.69	-	-	-	-
25	25.0	42.21	20.42	1197.9	91.83	0.61
50	50.0	63.12	39.53	1195.9	94.86	0.79
75	75.0	86.98	58.9	1193.8	95.51	0.85
100	100.0	113.33	78.55	1191.3	95.48	0.87
125	125.0	130.16	90.49	1189.8	95.31	0.87
150	150.0	141.73	98.53	1188.7	95.15	0.87
SF	-	-	-	-	-	-

	Torque, Lb-Ft	% Full Load Torque	Speed, RPM	Current Amps.
Locked Rotor Torque	974.23	217.0	-	850.883
Pull Up Torque	682.41	152.0	-	-
Breakdown Torque	1117.9	249.0	-	-
Full Load	448.954	100.0	1191.3	113.3

Speed Torque Curve

Please contact Techtop for image.

Dimensional Drawing



Dimensions are for reference only. Allowance should be made for minor deviations in non standard specified properties.

3D Image Link: Not available for this motor