



Three Phase Open Enclosure

NEMA

| | |
|----------------------|------------------------|
| MOTOR MODEL: | GR3-RS-OP-143T-2-B-D-1 |
| FACTORY TYPE: | - |

NEMA Rolled Steel, ODP

| ELECTRICAL DATA | | |
|----------------------------------------|--------------|---------|
| | 60 Hz | 50 Hz |
| Horsepower | 1.0 | - |
| Speed, RPM | 3450 | 2800 |
| Voltage | 230/460 | 190/380 |
| # Phase | 3 | |
| Full Load Amps | 2.96/1.48 | - |
| Power Factor | 0.78 | - |
| Nominal Efficiency | 81.0 | - |
| Service Factor | 1.25 | 1.0 |
| KVA Code | K | G |
| FL Amps. @ 208 V | 3.05 | - |
| LRC @ 60Hz HV | - | - |
| Start Capacitor | - | |
| Start Capacitor V | - | |
| Run Capacitor | - | |
| Run Capacitor V | - | |
| Number of Leads | 9 | |
| Connection | YY/Y | |
| Coil Resistance | 7.89 | |
| Date Code | - | |
| | | |
| Load | Efficiency % | P.F. |
| 50% | 77.15 | 0.5882 |
| 75% | 80.9 | 0.714 |
| 100% | 81.97 | 0.7903 |
| | | |
| FULL LOAD TEMPERATURE RISE | | |
| FL Temp Rise °C | 29.5 | 44.0 |
| | | |
| 3D Image Link | | |
| GR3-RS-OP-143T-2-B-D-1 | | |

| GENERAL DATA | | |
|--------------------------------------------|---------------|-------|
| Frame Size | 143T | |
| Frame Enclosure | ODP | |
| Mounting | Rigid | |
| Insulation Class | F | |
| Duty | Cont. / S1 | |
| NEMA Design | - | |
| Frame Material | Rolled Steel | |
| Ingress Protection | 23 | |
| Tropicalization | true | |
| Cable Entry | 1-NPT 3/4" | |
| Feet Removable | - | |
| Double Drilled | true | |
| Paint Color | Graphite Gray | |
| Paint RAL | 7024 | |
| Weight lb | - | |
| | | |
| MECHANICAL DATA | | |
| DE Bearing | 6205ZZ | |
| NDE Bearing | 6203ZZ | |
| dB No-Load | - | |
| Rotor Wk ² , Lb-Ft ² | - | |
| Comp Ring (wavy washer) | NDE | |
| | | |
| TORQUE VALUES | Torque lb-ft | % FLT |
| Locked Rotor Torque | 5.32 | 350.0 |
| Pull-Up Torque | 4.71 | 310.0 |
| Breakdown Torque | 6.46 | 425.0 |
| Full Load Torque | 1.52 | 100.0 |
| | | |
| SITE CONDITIONS | | |
| Ambient Temp °C | 40 | |
| Altitude Above Sea Level m | 1000 | |

*This report valid for above Date Code and newer models, please contact Techtop for more info.



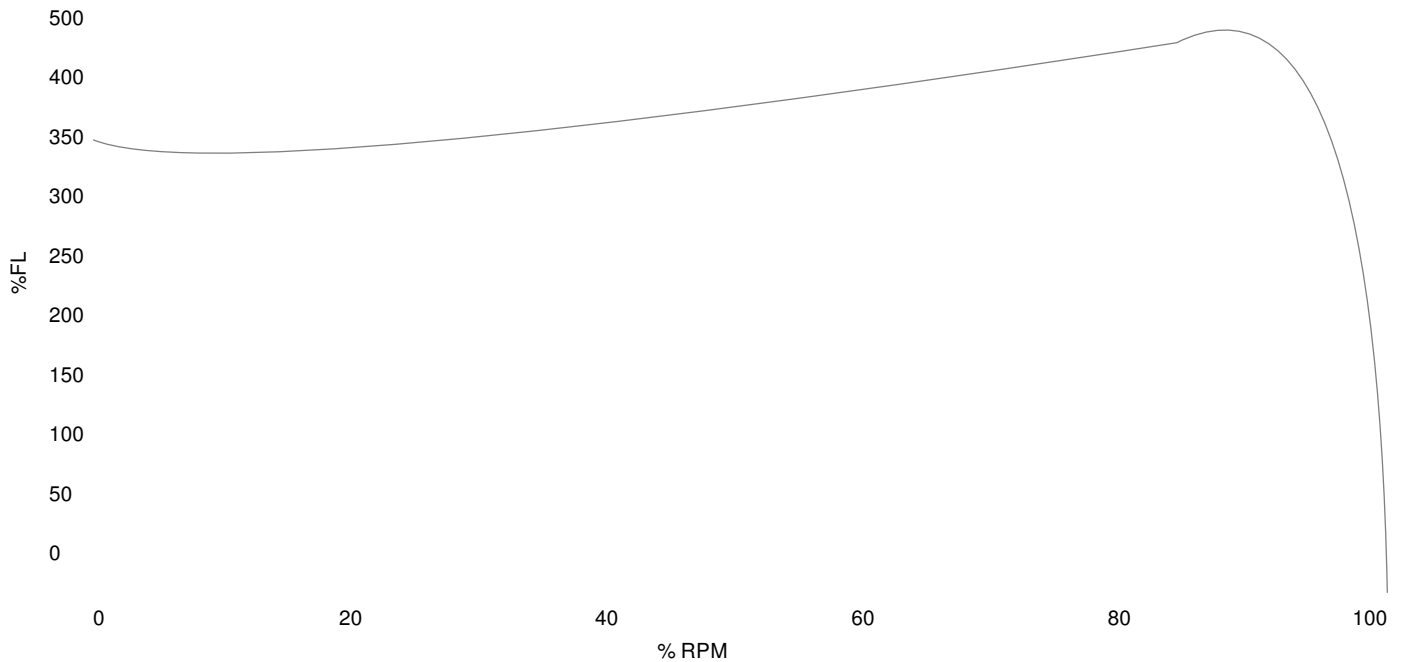
Three Phase Open Enclosure

| | |
|----------------------|------------------------|
| MOTOR MODEL: | GR3-RS-OP-143T-2-B-D-1 |
| FACTORY TYPE: | - |

NEMA

NEMA Rolled Steel, ODP

Torque Speed (T-n) Curve



Performance Load Values, High Voltage, 60Hz

| Torque Values | Torque lb-ft | % FLT | Performance Values |
|---------------------|--------------|-------|----------------------|
| Locked Rotor Torque | 5.32 | 350.0 | Start Configuration |
| Pull-Up Torque | 4.71 | 310.0 | Starting Current (A) |
| Breakdown Torque | 6.46 | 425.0 | No-Load Current (A) |
| Full Load | 1.52 | 100.0 | No-Load Power Factor |

| % Load | Horsepower | Current, Amps | Input power, Kilowatts | Speed, RPM | Efficiency | PF |
|--------|------------|---------------|------------------------|------------|------------|--------|
| 0 | - | - | - | - | - | - |
| 25 | - | - | - | - | - | - |
| 50 | - | - | - | - | 77.15 | 0.5882 |
| 75 | - | - | - | - | 80.9 | 0.714 |
| 100 | - | - | - | - | 81.97 | 0.7903 |
| 125 | - | - | - | - | - | - |

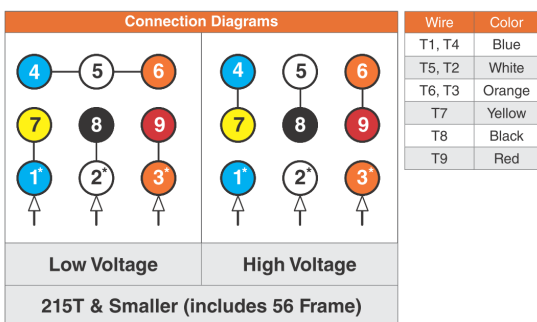
Techtop Industries
 2815 Colonnades Court
 Peachtree Corners, GA 30071
 Tel: 678-436-5540
 E-Mail: info@techttopind.com

| | |
|----------------------|------------------------|
| MOTOR MODEL: | GR3-RS-OP-143T-2-B-D-1 |
| FACTORY TYPE: | - |

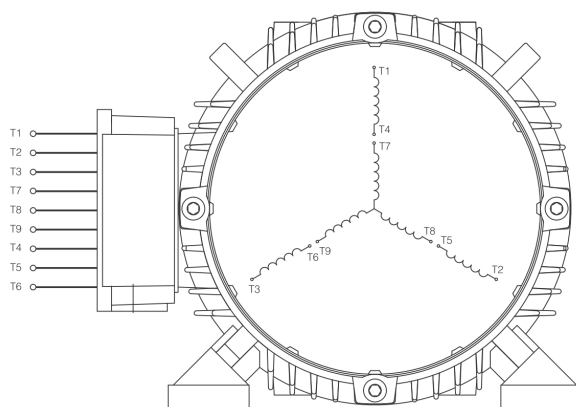
NEMA

NEMA Rolled Steel, ODP

3 Phase NEMA YY/Y 9 Lead 230/460V



When motor is in F1 position, leads shown with "*" exit the casing above the center line of the motor, the remaining leads exit below the center line. This information can be used to identify missing or mislabelled leads.



| | |
|----------------------|------------------------|
| MOTOR MODEL: | GR3-RS-OP-143T-2-B-D-1 |
| FACTORY TYPE: | - |

NEMA

NEMA Rolled Steel, ODP

