





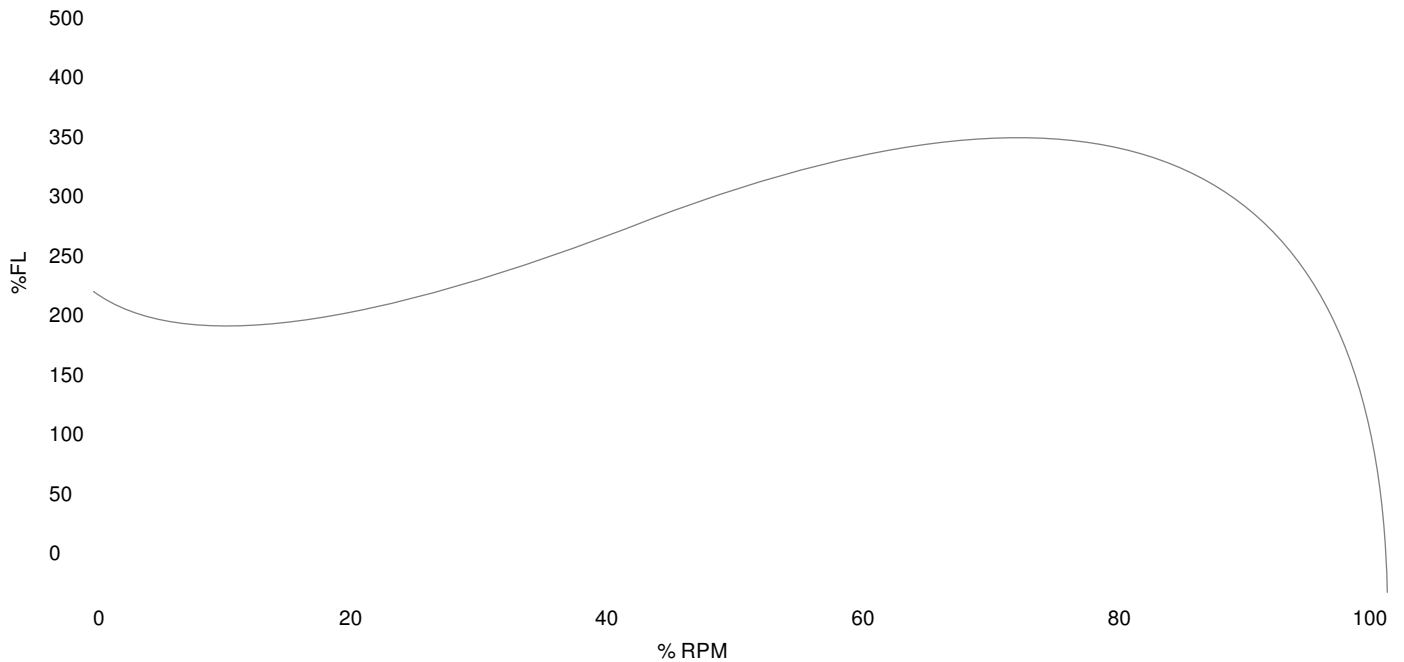
Oil Pump

**NEMA**

<b>MOTOR MODEL:</b>	BK3-CI-TF-444T-6-RR-G-75
<b>FACTORY TYPE:</b>	-

NEMA Cast Iron, TEFC

Torque Speed (T-n) Curve



Performance Load Values, High Voltage, 60Hz

Torque Values	Torque lb-ft	% FLT	Performance Values
Locked Rotor Torque	787.773	233.0	Start Configuration
Pull-Up Torque	537.579	159.0	Starting Current (A)
Breakdown Torque	977.109	289.0	No-Load Current (A)
Full Load	338.1	100.0	No-Load Power Factor

% Load	Horsepower	Current, Amps	Input power, Kilowatts	Speed, RPM	Efficiency	PF
0	0.0	25.42	-	-	0.0	-
25	-	-	-	-	-	-
50	-	-	-	-	-	-
75	-	-	-	-	-	-
100	-	-	-	-	-	-
125	-	-	-	-	-	-

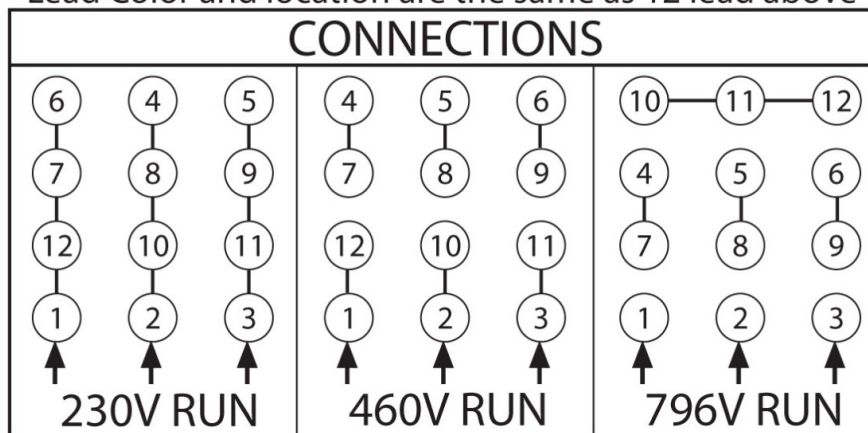
Techtop Industries  
 2815 Colonnades Court  
 Peachtree Corners, GA 30071  
 Tel: 678-436-5540  
 E-Mail: info@techttopind.com

<b>MOTOR MODEL:</b>	BK3-CI-TF-444T-6-RR-G-75
<b>FACTORY TYPE:</b>	-

# NEMA

## NEMA Cast Iron, TEFC

3 Phase -  $\Delta/\Delta\Delta/Y$  - 12 Lead - BK3 Motors  
 Lead Color and location are the same as 12 lead above



<b>MOTOR MODEL:</b>	BK3-CI-TF-444T-6-RR-G-75
<b>FACTORY TYPE:</b>	-

NEMA Cast Iron, TEFC

