



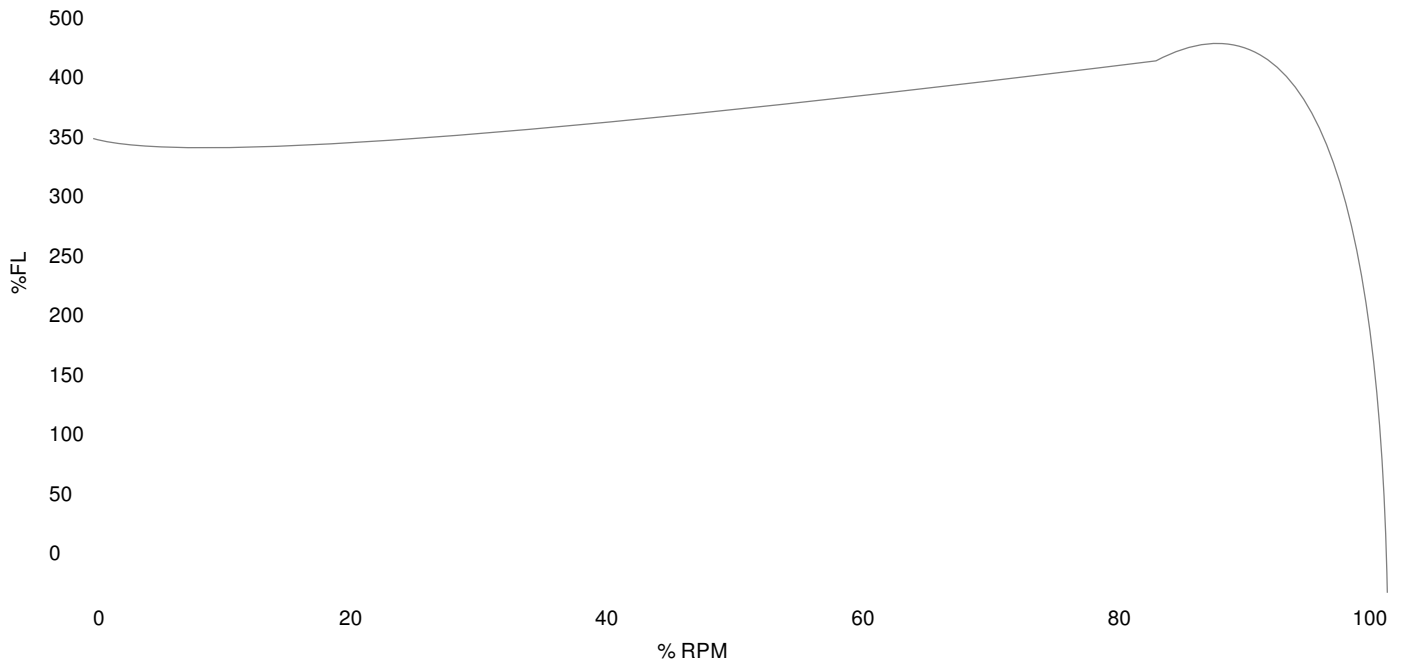
Three Phase Cast Iron

NEMA

MOTOR MODEL:	GR3-CI-TF-145TC-4-B-D-1.5
FACTORY TYPE:	TXC

Premium NEMA Cast Iron, TEFC

Torque Speed (T-n) Curve



Performance Load Values, High Voltage, 60Hz

Torque Values	Torque lb-ft	% FLT	Performance Values
Locked Rotor Torque	16.1544	351.0	Start Configuration
Pull-Up Torque	14.8197	322.0	Starting Current (A)
Breakdown Torque	18.9158	411.0	No-Load Current (A)
Full Load	4.60239	100.0	No-Load Power Factor

% Load	Horsepower	Current, Amps	Input power, Kilowatts	Speed, RPM	Efficiency	PF
0	-	1.34	-	-	-	-
25	0.375	1.4	0.36898	1787.5	76.22	0.33
50	0.75	1.57	0.66518	1775.8	84.56	0.53
75	1.125	1.83	0.97214	1763.0	86.79	0.67
100	1.5	2.16	1.2917	1749.1	87.1	0.75
125	1.875	2.54	1.6257	1734.1	86.5	0.8

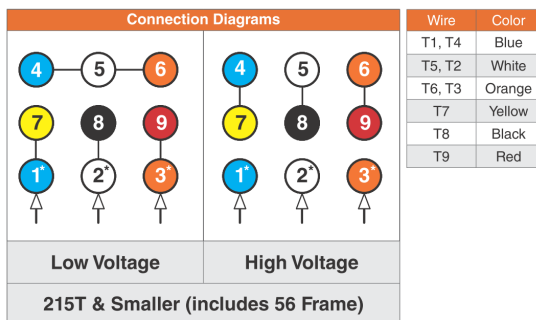
Techtop Industries
 2815 Colonnades Court
 Peachtree Corners, GA 30071
 Tel: 678-436-5540
 E-Mail: info@techttopind.com

NEMA

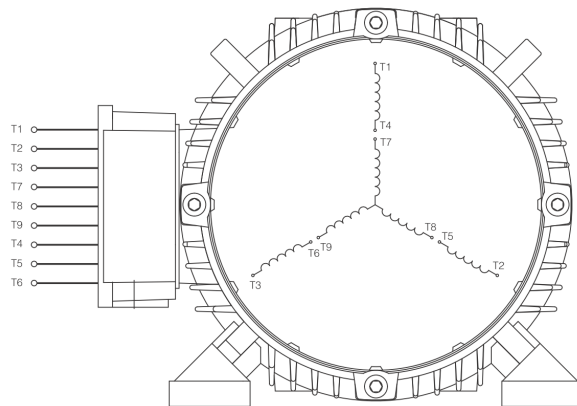
MOTOR MODEL:	GR3-CI-TF-145TC-4-B-D-1.5
FACTORY TYPE:	TXC

Premium NEMA Cast Iron, TEFC

3 Phase NEMA YY/Y 9 Lead 230/460V



When motor is in F1 position, leads shown with "*" exit the casing above the center line of the motor, the remaining leads exit below the center line. This information can be used to identify missing or mislabelled leads.



NEMA

MOTOR MODEL:	GR3-CI-TF-145TC-4-B-D-1.5
FACTORY TYPE:	TXC

Premium NEMA Cast Iron, TEFC

